

# cecotec

μ Spinning μ  
DrumFit CrossFit 1000 Eolo CEC-07228

Cecotec



## DRUMFIT





1.

1

No.			No.		
1		1	18R	(R)	1
2		1	19	∅21×∅13×10	2
3		1	20	∅18×∅34×2.5	2
4L	μ (L)	1	21	∅31×∅29×∅13×11	2
4R	μ (R)	1	22L	μ 1/2" /L	1
5L	(L)	1	22R	μ 1 1/2" /R	1
5R	(R)	1	23	M12	1
6		1	24	μ M8×45	2
7	64×21×2.5	1	25	Hub ∅18×∅14×∅8×∅10	2
8		2	26		1
9	μ	2	27	∅25×∅22.2×∅16.3×15	6
10	μ μ M8×40	2	28	μ ∅24×13	2
11	μ μ ∅8×∅20×1.5	2	29	∅8×∅24×δ2.0	2
12	μ M8	2	30	∅16×260×M8	1
13	μ M5×15	5	31		1
14	∅5×∅14×δ1.0	5	32	∅23×∅33×280	2
15	μ M8	7	33	μ ∅25	4
16	∅8×∅16×δ1.5	5	34	L= 500 mm	1
17		1	35	μ ∅17×∅22×δ0.3	2
18L	(L)	1			
18R	(R)	1			

Allen 4 mm.

3 μ 4

2. μ

μ

μ

μ

μ

3.

μ

μ

Allen.

μ

(29)  
μ

μ (30)

(35) μ

(1).

(30).

2

4

μ

.

μ

μ

.

μ

μ

μ

AA

μ

μ

μ

μ

μ

μ

μ

Cecotec.

Drumfit CrossFit 1000 Eolo

5

(1) μ

(13)

(1) μ

(1) μ

6

(30).

(13)

(2).

μ

μ

μ

8x 24x 2.0

AA

μ

μ

5x 14x 1.0 (14).

μ M8×40 (10), (12).

5x 14x 1.0 (14) (2)

(13) μ

(3) μ

8x 20x 1.5 (11) μ

M8 (15), μ

(35) μ (1).

(35), M8 (15). (4L) (4R) 8x 24x 2.0 (29) (1) (1) Phillips. S13 (28) M12 (23) (6) M12 (23) M8 (15). M5x15 (13) (1). 5x 14x 1.0 (14) (7) M5x15 (13) (1) Allen. 5x 14x 1.0 (14). (31) (31) (7) (34). 7 (5L) (5R) (4L) (4R) M8x45 (24), M8 (15). Phillips Allen. "L" "R" (22L) (18L) (18L). 18x 34x 2.5 (20) 21x 13x10 (19), (5L). (22L). (18L) (18R). 18x 34x 2.5 (20) (22R) (18R) 21x 13x10 (19), (5R). (22R). 8 (17). 8 (16) (17). (15) (6) 8 (16). (6) (1) (6) (6) M16 M12 (23) (6).

MODE AUTO ON/OFF: TIME: SPEED: DISTANCE: CALORIES: SCAN: AA. 5. M12 (23) M12 (23) (6) 3-4 4 TIME: SPEED: DISTANCE: CALORIES: SCAN: AA. 5. M12 (23) M12 (23) (6) 3-4 4 TIME: SPEED: DISTANCE: CALORIES: SCAN: AA. 5. M12 (23) M12 (23) (6) 3-4 4 TIME: SPEED: DISTANCE: CALORIES: SCAN: AA. 5.

35

6.

7.

	<p>μ μ</p> <p>μ μ μ μ μ</p>
	<p>μ</p> <p>□</p>

8.

: 07228

Drumfit CrossFit 1000 Eolo

: 100

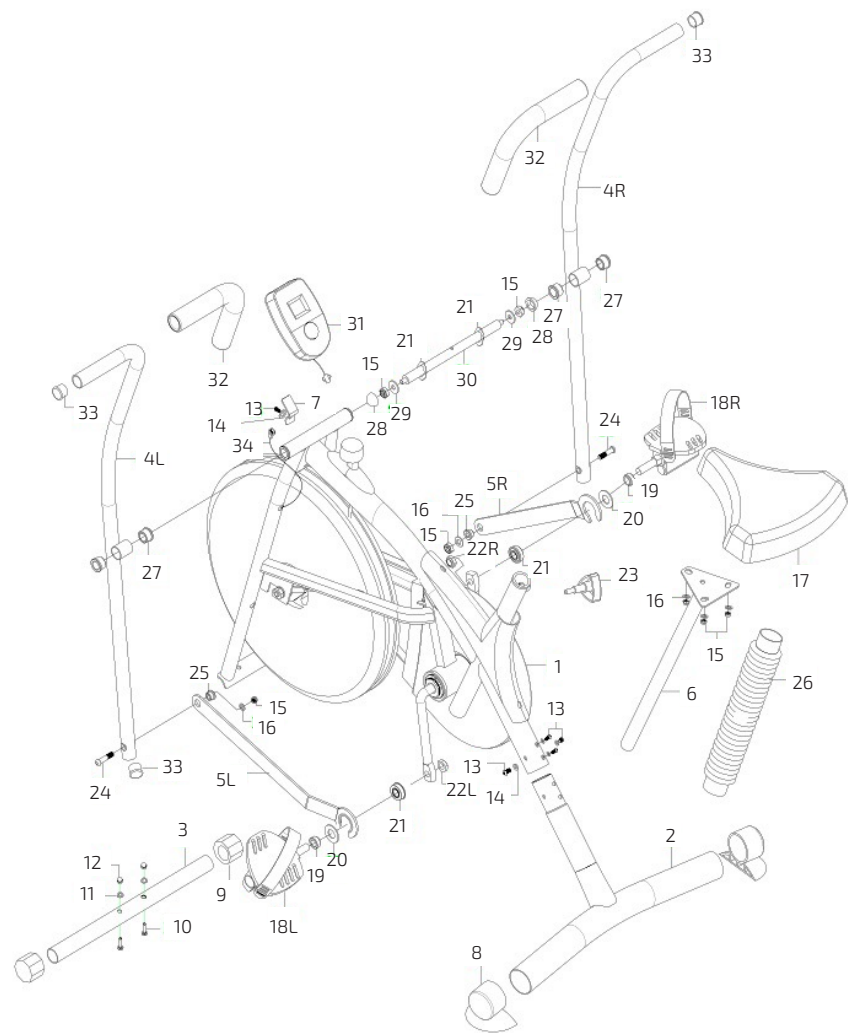


Fig./Img./Abb./Afb./ Rys./Obr. 1

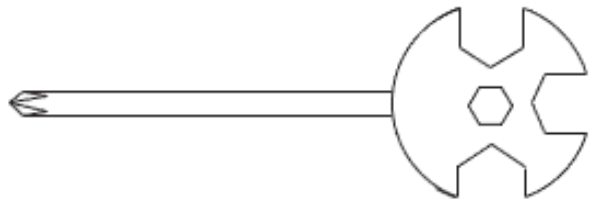


Fig./Img./Abb./Afb./ Rys./Obr. 2



Fig./Img./Abb./Afb./ Rys./Obr. 3

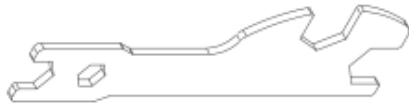


Fig./Img./Abb./Afb./ Rys./Obr. 4

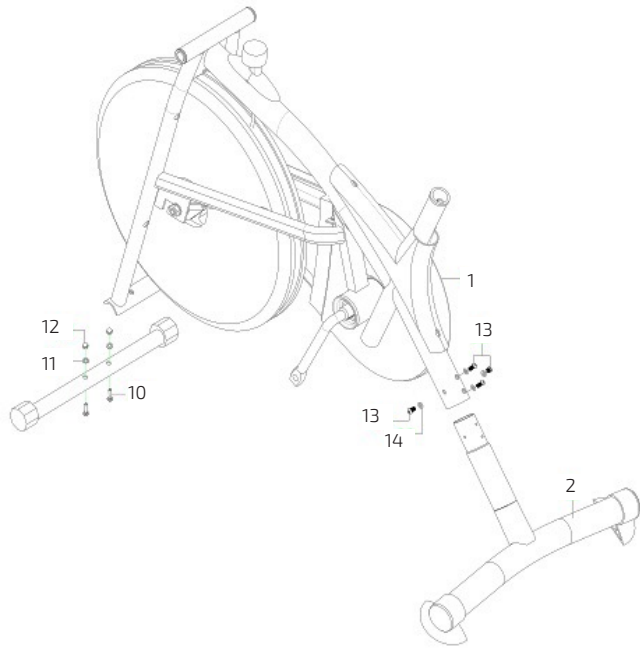


Fig./Img./Abb./Afb./ Rys./Obr. 5

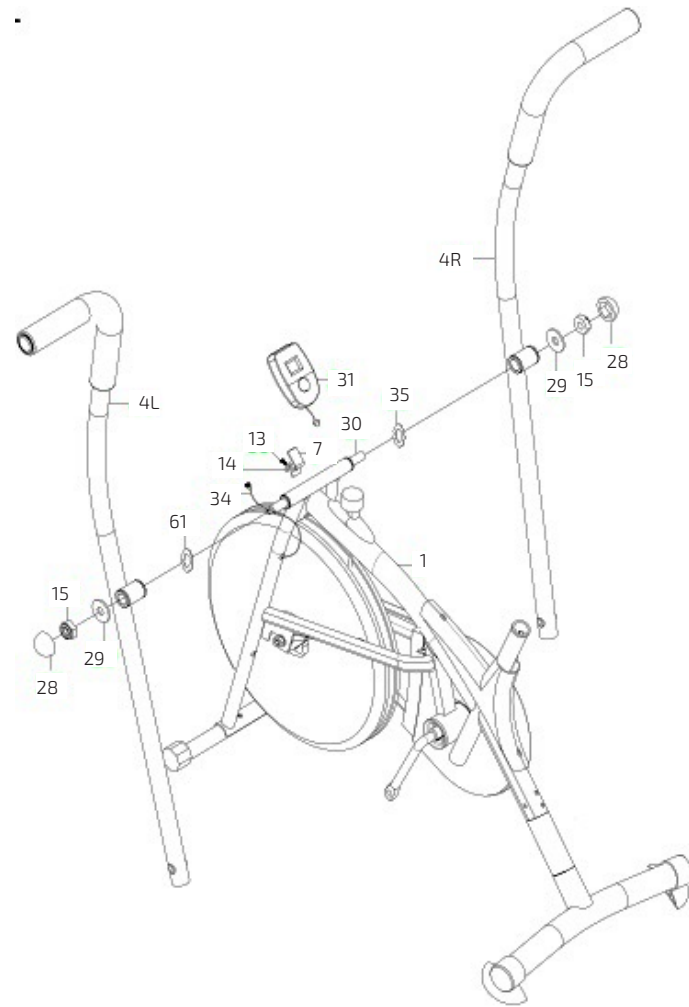


Fig./Img./Abb./Afb./ Rys./Obr. 6



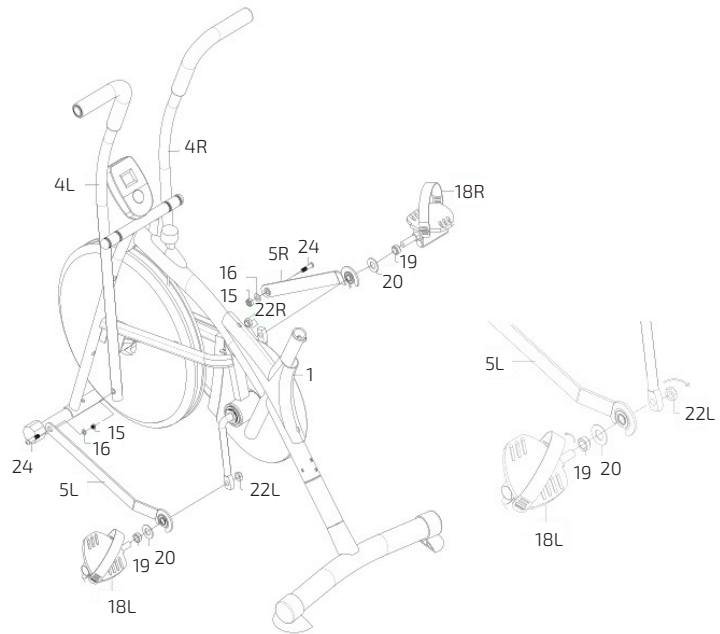


Fig./Img./Abb./Afb./ Rys./Obr. 7

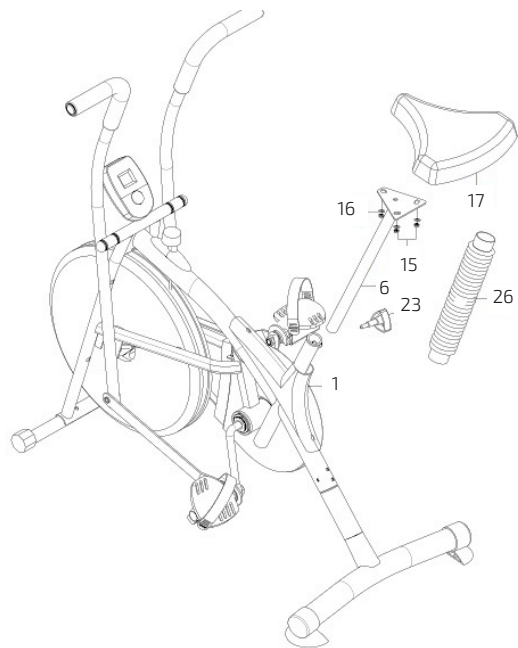


Fig./Img./Abb./Afb./ Rys./Obr. 8